



GÉANT: Pioneering the future Internet
Launch Event
Stockholm, Dec 1-2 2009

Perspectives on networks' contribution to societal and environmental issues

e-Infrastructures for Alzheimer's disease

Giovanni B Frisoni

Vice Scientific Director

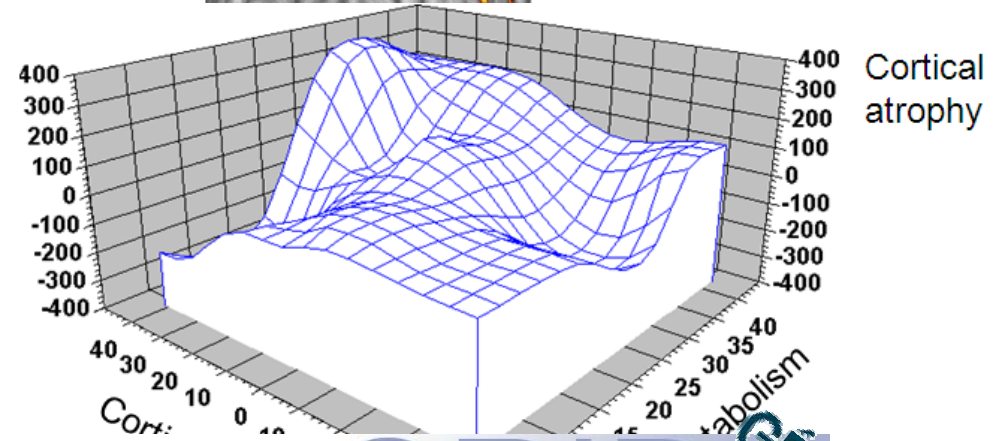
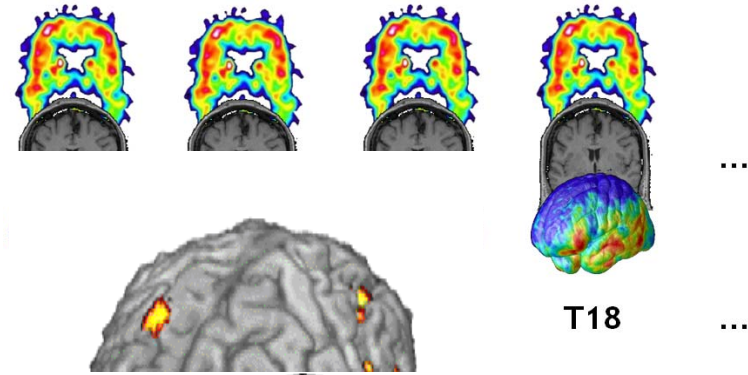
*IRCCS Fatebenefratelli, The National Center for Alzheimer's and
Mental Diseases, Brescia, Italy*

Markers to diagnose and assess treatment effect

| | Diabetes |
|--------------------------------|---------------------|
| <i>Diagnosis</i> | Glicaemia |
| <i>Assess treatment effect</i> | Glycated hemoglobin |

Recipe to develop markers for Alzheimer's disease:

1. Large databases ('0,000s) of very mildly affected patients
2. Accurate algorithms for image analysis
3. Sophisticated statistical models
4. Powerful computational resources
5. Strong link with related international efforts



THE GRAND VISION

A Worldwide e-Infrastructure for Computational Neuroscientists

